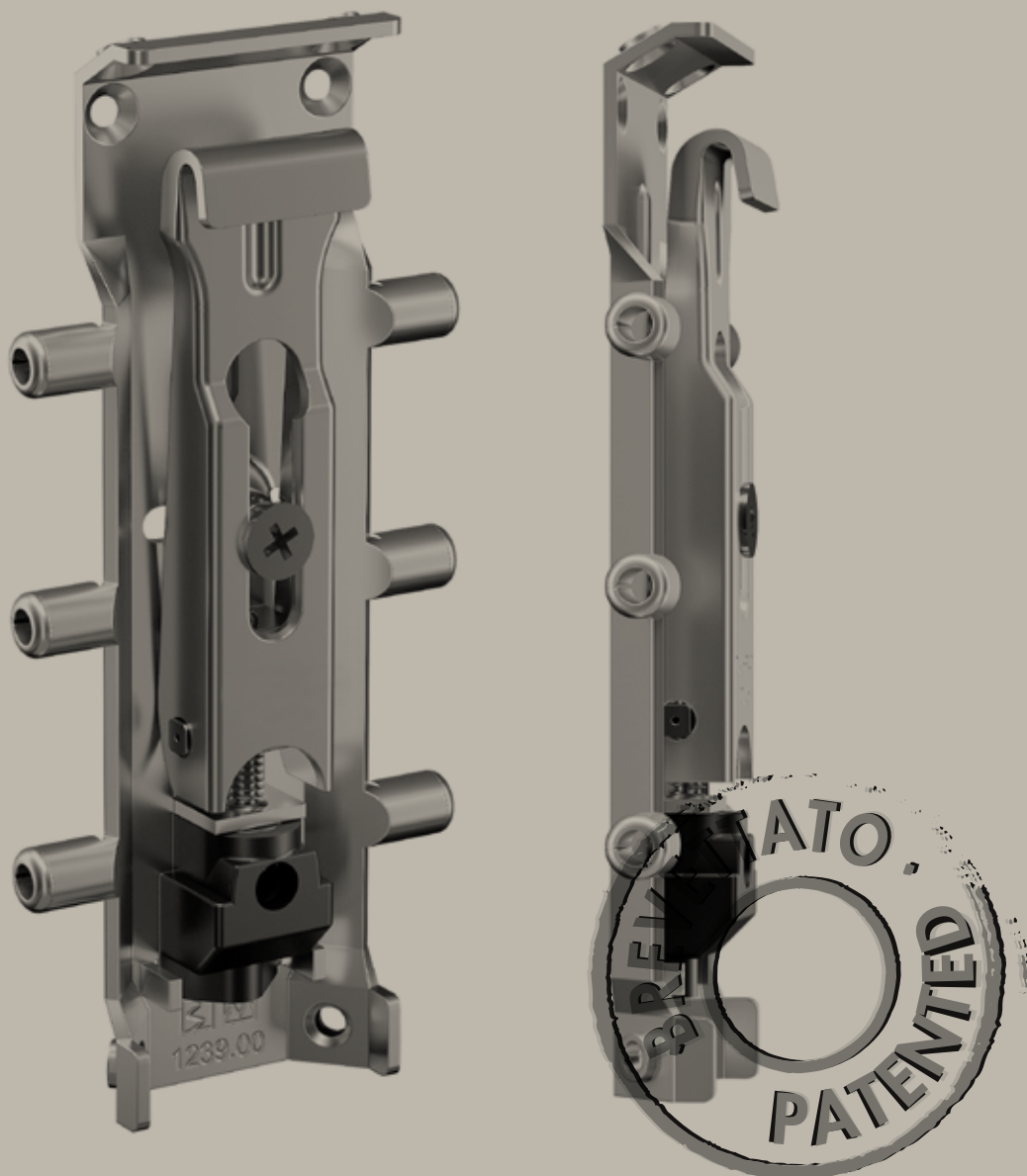


**SIKURA**  
ATTACCAGLIA PER MOBILI  
HANGERS FOR FURNITURE



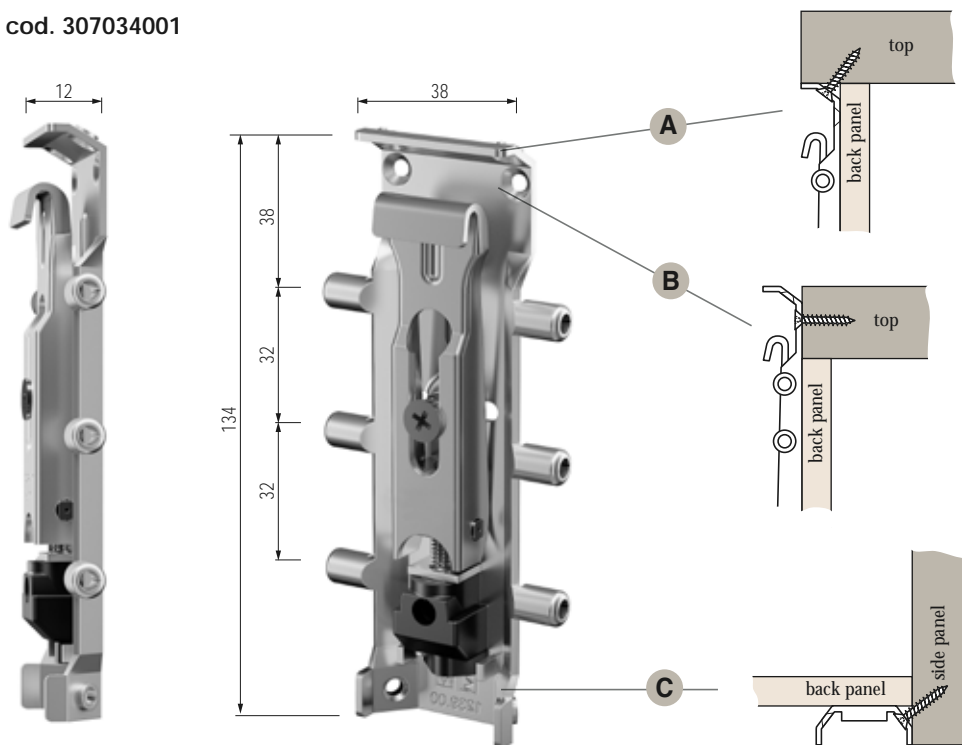
Attaccaglia Sikura: dà soluzione a tutti i problemi di portata, ancoraggio e sicurezza dei mobili sospesi.  
Grande regolazione, grande portata e sicurezza di ancoraggio al mobile.

*Sikura hangers successfully meet any requirement in terms of wall cabinet load bearing capacity, anchoring and safety.  
They are adjustable, have a high load bearing capacity, keep the wall cabinet securely anchored to the wall.*

# ATTACCAGLIA PER MOBILI SOSPESI

## HANGERS FOR SUSPENDED FURNITURE

cod. 307034001



Nella progettazione di Sikura sono stati previsti più punti di fissaggio atti a rinforzare l'unione dell'attaccaglia al mobile. Le tipologie di applicazione sono principalmente di **tipo A** per mobile con Top di finitura e **tipo B** con Top filo schiena. Nella parte inferiore di Sikura sono invece previste due alette per il fissaggio al fianco Dx o Sx (vedi **schema C**).

*Sikura features more fastening points, so that the wall cabinet can be better secured to the hanger. There are two main applications: application **type A** is for cabinets with a finishing top panel; application **type B** is for cabinets with a top panel that is flush with the back panel. The bottom part of a Sikura hanger features two flaps, which are to be fastened to the RH or LH sidepanel of the cabinet (see **diagram C**).*

**.1**

Il set completo composto da due attaccaglie con un'unica piastra.

Complete kit with two hangers and a single plate.

**.2**

La piastra ha un'incisione a metà che ne permette la facile divisione.

The plate has a central groove so that it can be easily split.

**.3**

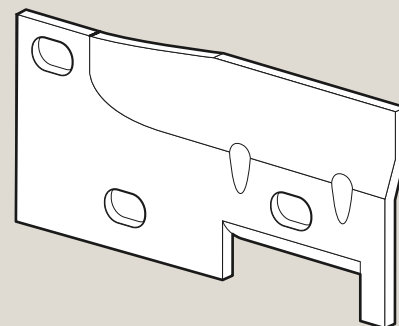
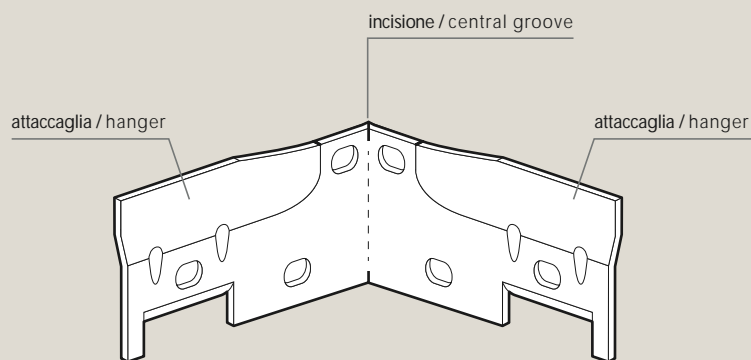
È sufficiente piegare la piastra per spezzarla in due.

Simply bend the plate to split it.

**.4**

La piastra è fissata alla parete con normali tasselli e viti.

The plate is secured to the wall with standard screws and dowels.





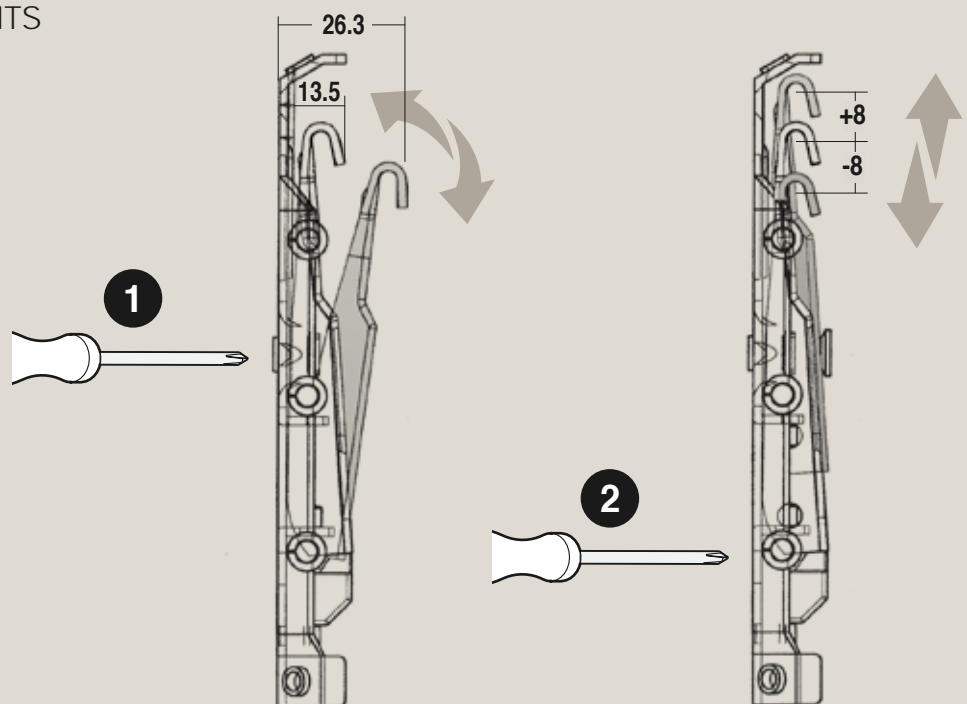
Portata **kg. 80** secondo **NORMA EN 15939:2019**  
Load bearing capacity **80 kg** according to **EN 15939:2019**

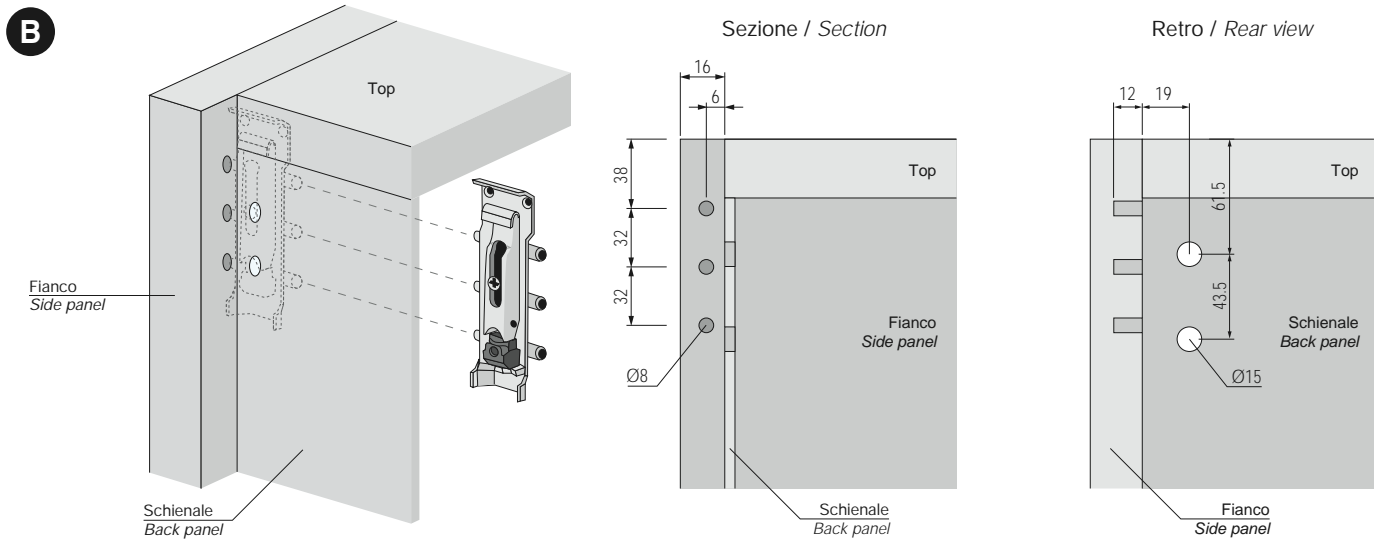
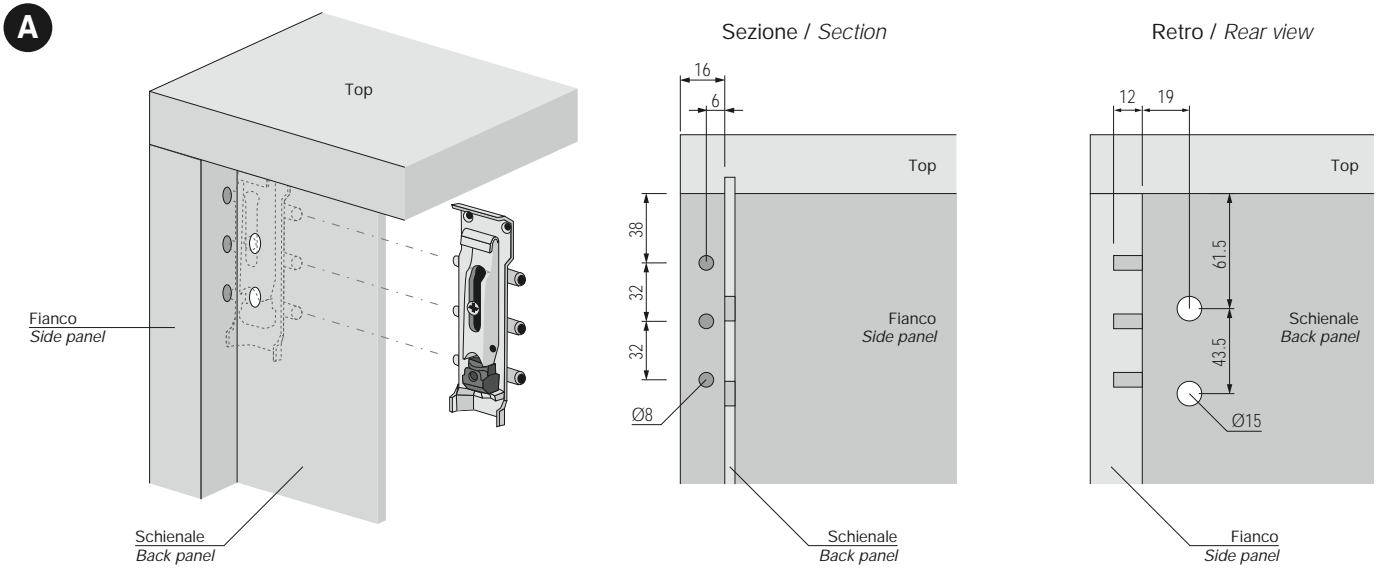


## REGOLAZIONI / ADJUSTMENTS

Oltre alla facilità nell'allineamento dei mobili, con la regolazione per la sporgenza "1" e per l'altezza "2", Sikura garantisce una potente resistenza e una grande tenuta nel tempo.

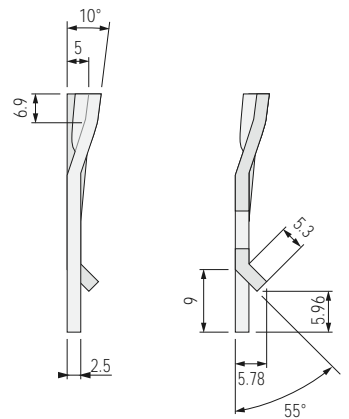
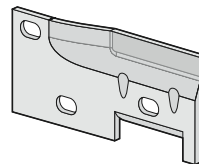
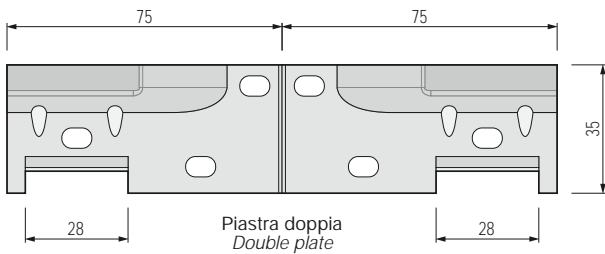
Because both protrusion "1" and height "2" can be adjusted, Sikura ensures the wall cabinets are perfectly aligned and delivers excellent resistance and duration.





PIASTRA DI ANCORAGGIO / FASTENING PLATE

cod. 307034101

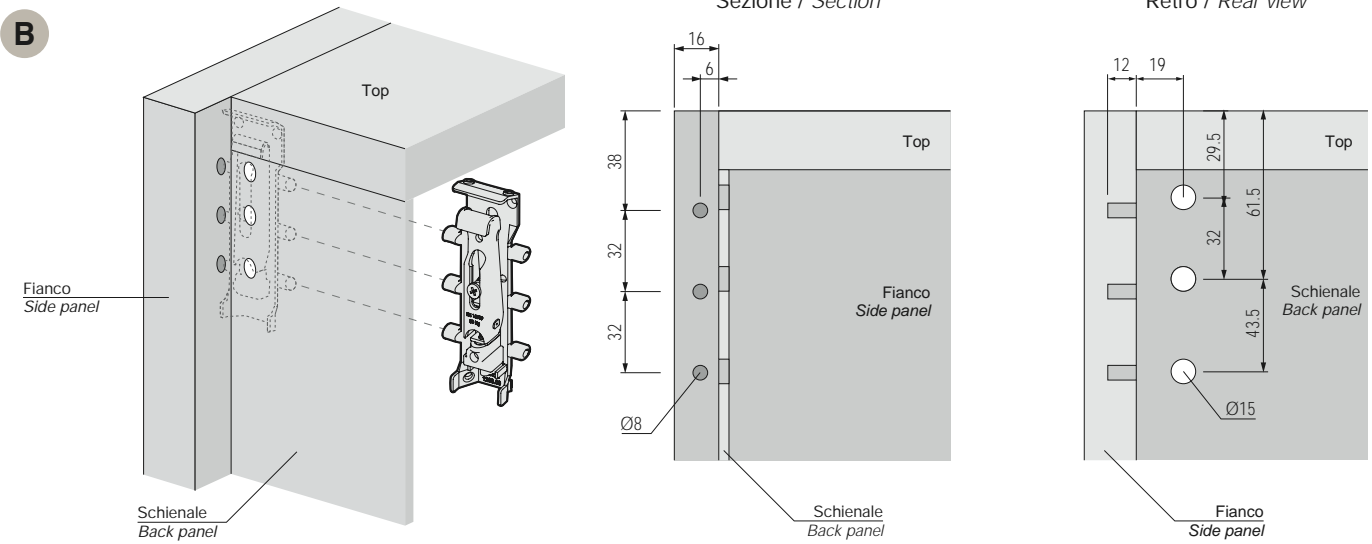
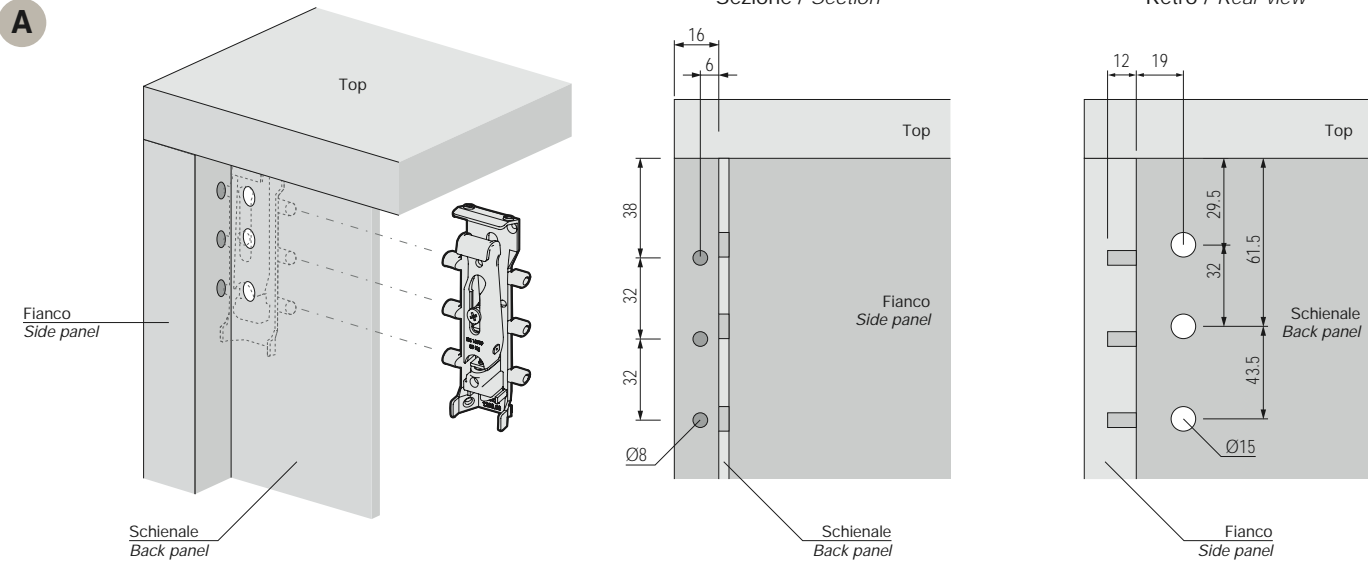


Viale Europa, 30  
31018 Albina di Gaiarine (TV) - Italy  
Tel. +39 0434 75044 - Fax +39 0434 759190  
e-mail: info@perinspa.com  
[www.perinspa.com](http://www.perinspa.com)



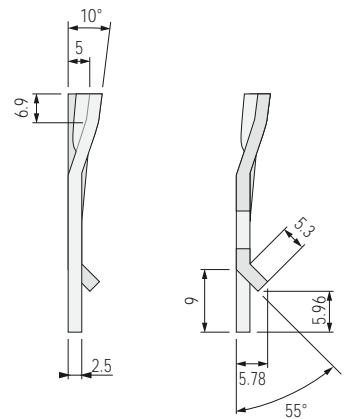
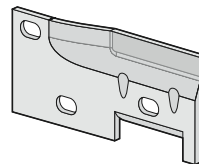
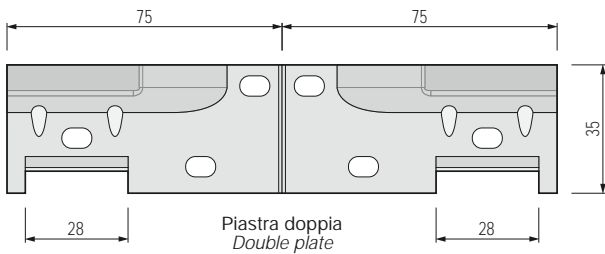






PIASTRA DI ANCORAGGIO / FASTENING PLATE

cod. 307034101



Viale Europa, 30  
31018 Albina di Gaiarine (TV) - Italy  
Tel. +39 0434 75044 - Fax +39 0434 759190  
e-mail: info@perinspa.com  
[www.perinspa.com](http://www.perinspa.com)